

2006

City of Toronto Community Council Profiles

Etobicoke York



November 2008

Etobicoke York Community Council Area Demographic Highlights

Below are some highlights for the Etobicoke York Community Council area from the 2006 Census results, illustrated with the accompanying maps. A full profile is available on the City's website at: www.toronto.ca/committees/community_councils.htm

The Etobicoke York Community Council Area occupies 187 sq km (72 sq miles) and its population reached 595,320 in 2006.

The distribution of the population across Etobicoke York (Map 1) closely reflects the distribution of housing types, with areas of predominantly apartments showing high concentrations of people. Overall, 35% of occupied private dwellings were in single-detached houses and 33% were in high-rise apartments in 2006, while 59% were owned and 41% rented. (See 'Note on Dwelling Structure Data,' below.)

Etobicoke York's population fell by 1.5% between 2001 and 2006, compared with 0.8% growth for the City as a whole. The map of population change (Map 2) shows that large areas of Etobicoke York are either declining in population or growing very slowly, with the Etobicoke Centre and old Weston standing out as the main areas of growth.

About 40% of Etobicoke York's population are visible minorities, compared with 49% in the rest of the City. Neighbourhoods with higher levels of visible minorities are found in the Weston Rd corridor and the north west quadrant of the Community Council area (Map 3).

This is reflected in other ethnocultural characteristics:

Following English (65%), the top 3 languages spoken in Etobicoke York Community Council area homes in 2006 were:

Italian (3.5%)

Spanish (3.4%)

Portuguese (2.9%)

In 2006, 50% of the total population were immigrants, and 9% (one in eleven) of the population arrived in Canada between 2001 and 2006.

The top 3 places of birth among recent immigrants were:

Southern Asia (31.1%)

Eastern Europe (12.2%)

South America (8.4%)

The median household income in Etobicoke York in 2005 was \$54,874, which is similar to the median for the whole City (\$52,833). About 21% of the households had an income of over \$100,000. Map 4 shows large areas of high income in the central parts of Etobicoke York, with other pockets scattered across the rest of the Community Council area.

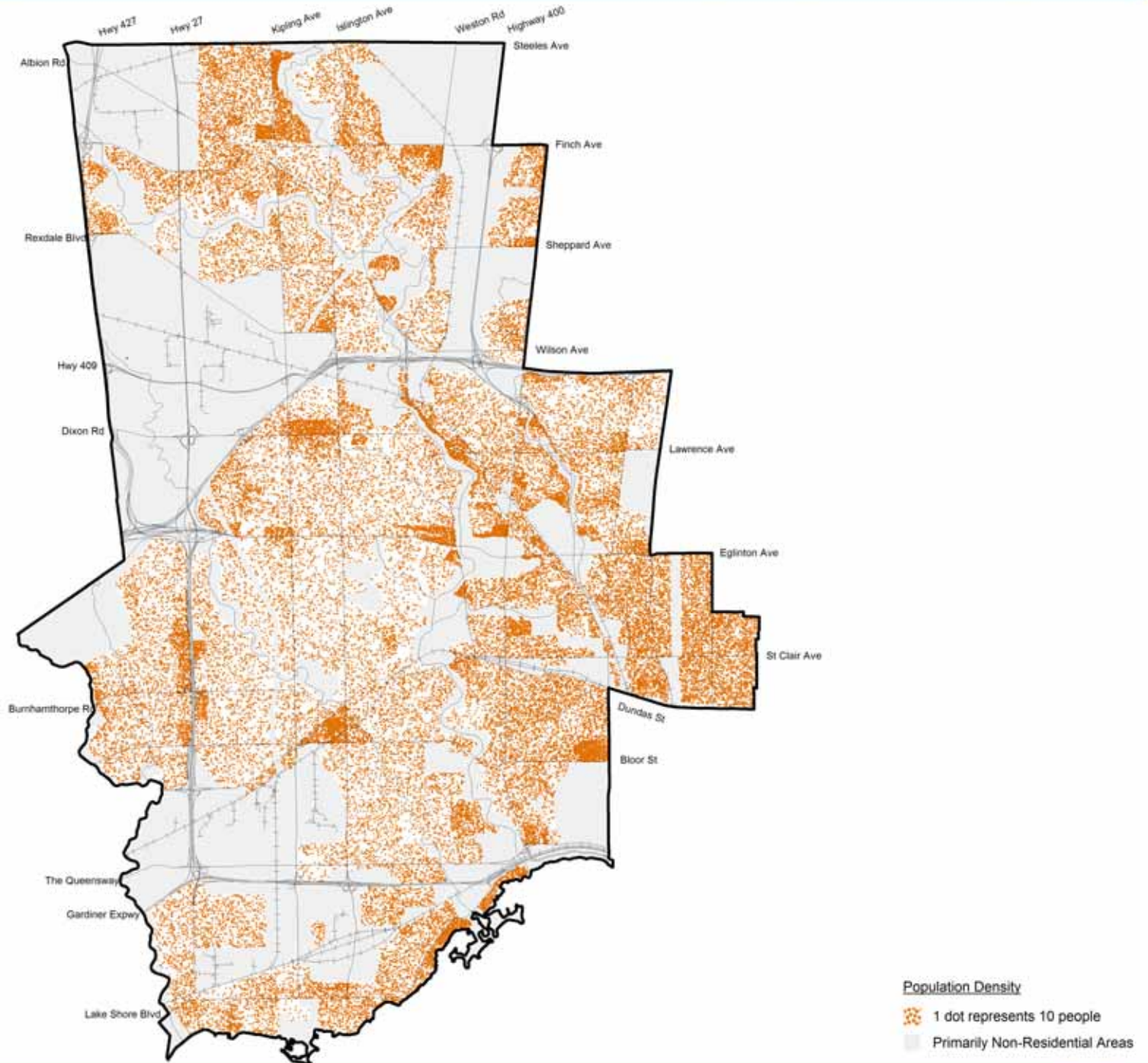
About 22% of Etobicoke York's population are considered to be in low income, a similar level to the City as a whole (24.5%). Map 5 shows that concentrations of low income in Etobicoke York are found in some, but not all, of the areas with concentrations of apartments and population, and are noticeably absent from most of the area south of Hwy 401 and west of the Humber.

In 2007, there were about 251,675 jobs in Etobicoke York, representing 20% of the City's total employment.

Note on the Maps: The maps are based on data for very small areas known as Dissemination Areas (DAs). One of the prime purposes for this geography is administrative rather than analytical: they are used by Statistics Canada to organize its collection of Census information. Consequently, some of these areas have 'odd' shapes and convoluted boundaries: the variations in data values they indicate may not always be as precise as the boundaries show. Nevertheless, using DAs gives a much better picture of the local variations in demographic characteristics than using the larger Census Tracts would show.

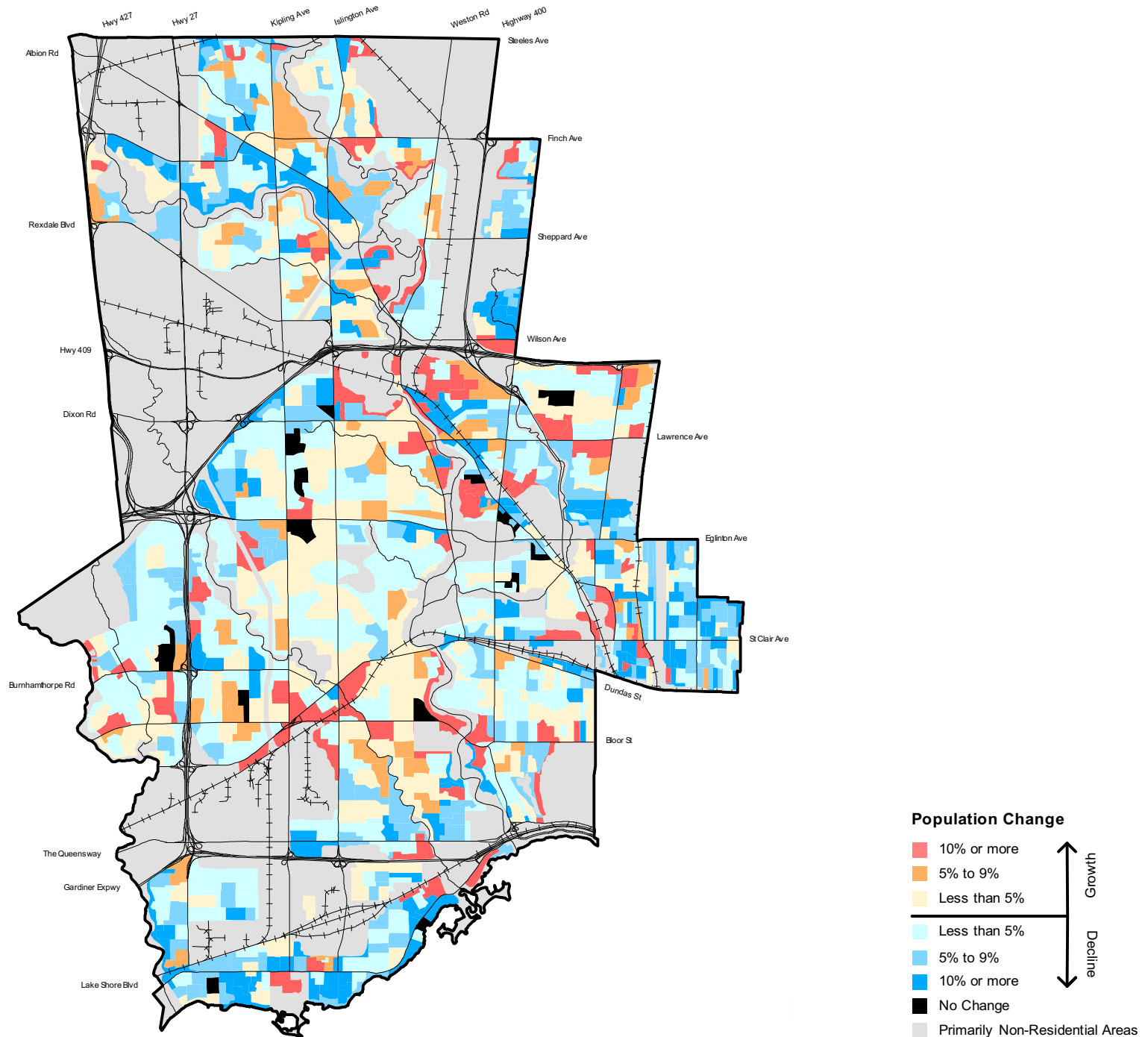
Note on Dwelling Structure Data: In 2006, changes to the census enumeration process meant that many dwelling units in structures that may have been previously defined as singles or semis were classified as 'apartments in buildings with less than five storeys,' or as 'apartments or flats in a duplex.'

For further information please contact cityplanning@toronto.ca or Research and Information at 416-392-8343.



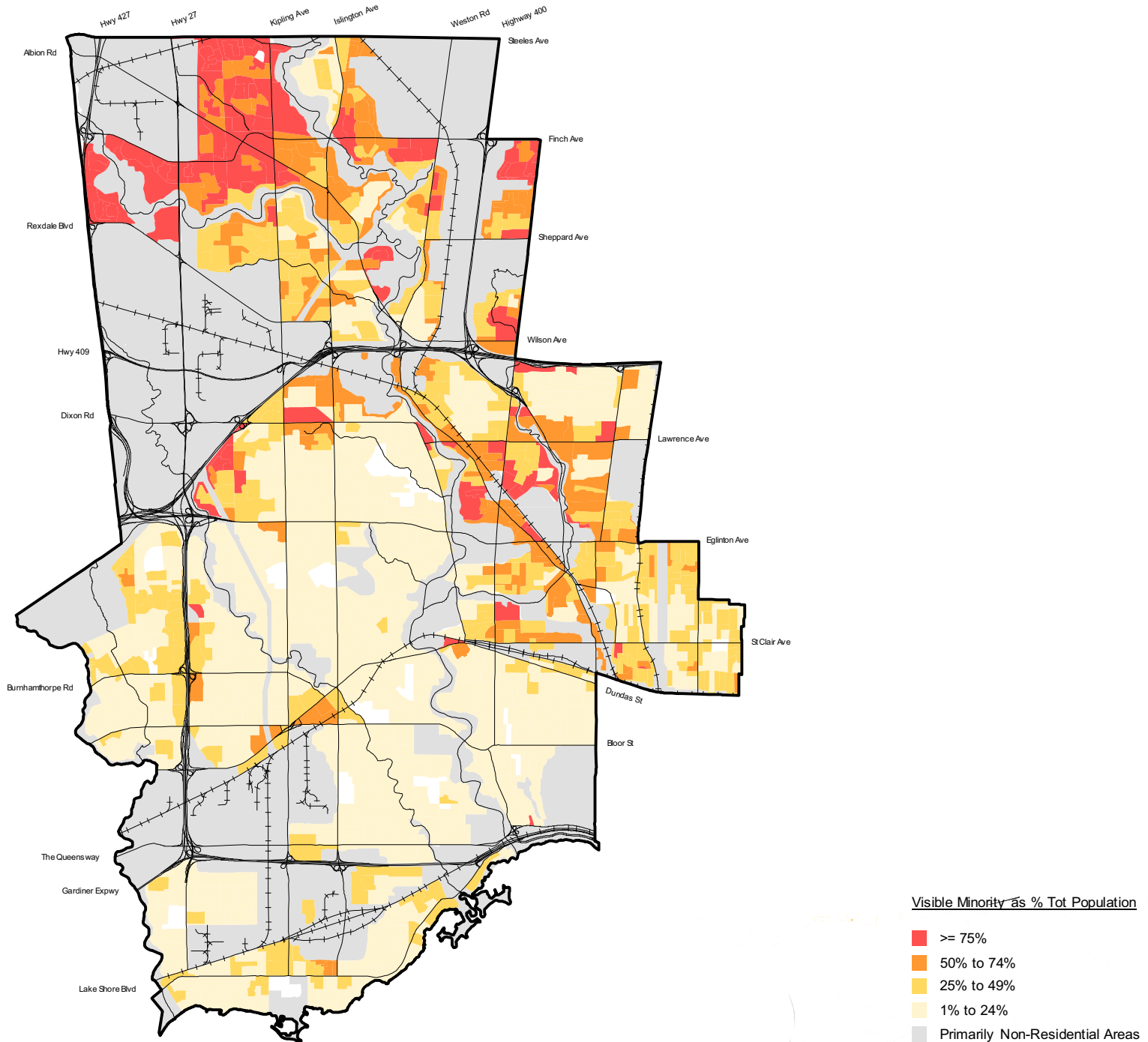
Source: Statistics Canada - 2006 Census.
Note: Data distributed by dissemination area.





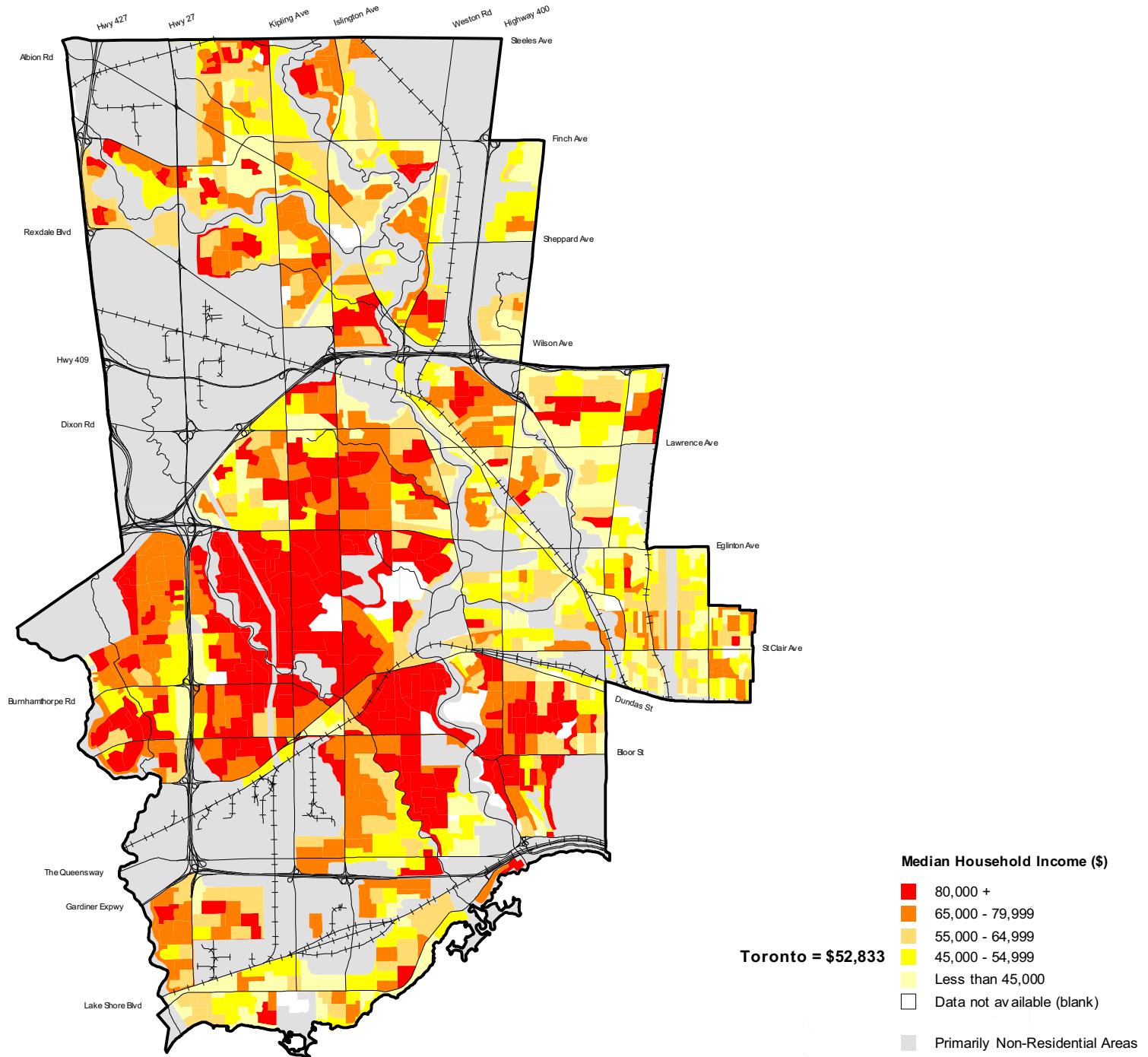
Source: Statistics Canada - 2006 Census.
 Note: Data distributed by dissemination area.





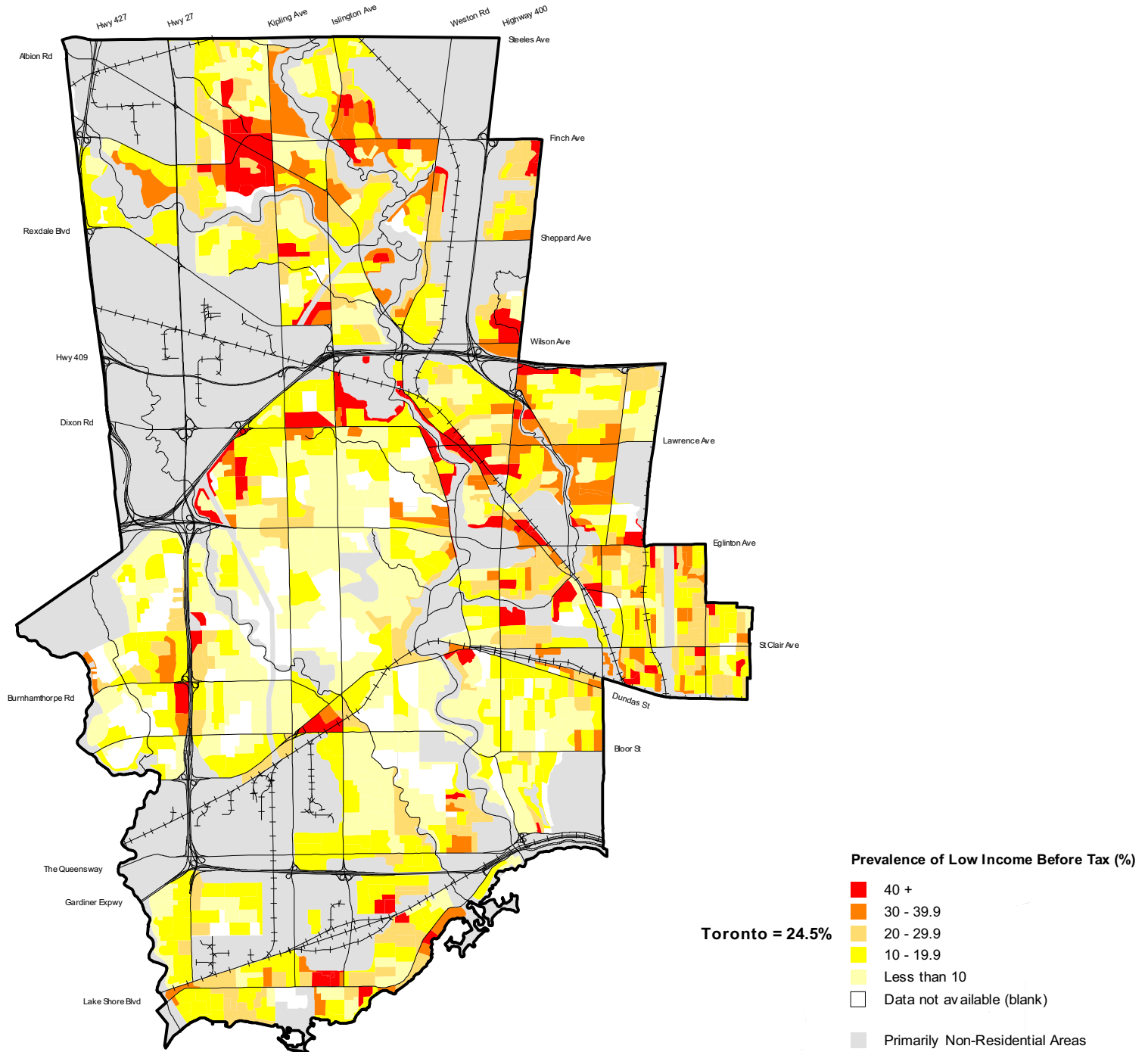
Source: Statistics Canada - 2006 Census.
 Note: Data distributed by dissemination area.





Source: Statistics Canada - 2006 Census.
 Note: Data distributed by dissemination area.





Source: Statistics Canada - 2006 Census.
 Note: Data distributed by dissemination area.

